

# How to load your ROS digital certificate into a new web browser

## Step 1 – Save your Certificate

1. Using your original browser, click “**Manage My Certificates**” on the ROS login screen.

Revenue  
Cáin agus Custaim na hÉireann  
Irish Tax and Customs

ROS  
Revenue Online Services

### Secure Sign In for Business Customers

**Select Certificate**

mary

You can load a digital certificate [Manage My Certificates](#) ⓘ

**Enter Password**

Enter Password

Cannot find certificate or forgot password > [Reset Login](#) ⓘ

**Login to ROS**

[Register for ROS](#)

Digital certificate explained  
See How it Works

2. In the Manage My Certificates screen, click the Download symbol (under Save) for the loaded certificate that you want to save.

### 1. Choose your certificate here: ⓘ

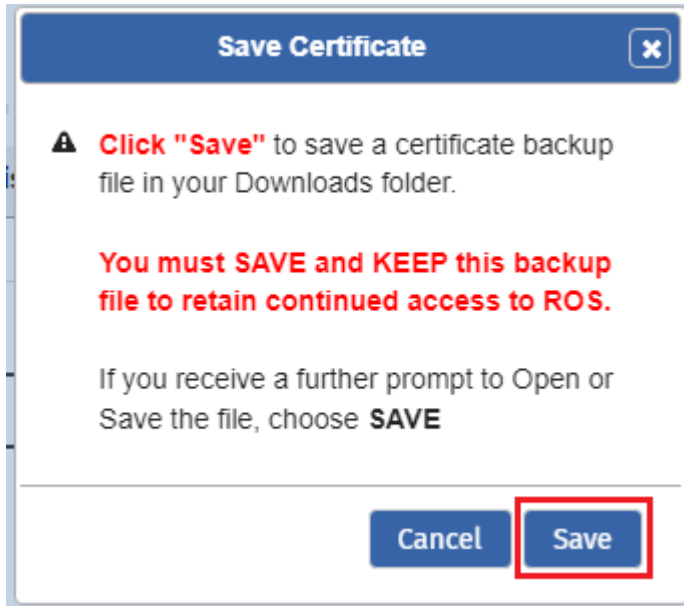
Search for a certificate (.p12 file)  
on your computer

Drop a file here to upload, or  
[Click to browse for a file](#)

Loaded certificates will be displayed here: ▾	Save	Remove
mary		

### 2. Enter Password

3. Click the **“Save”** button

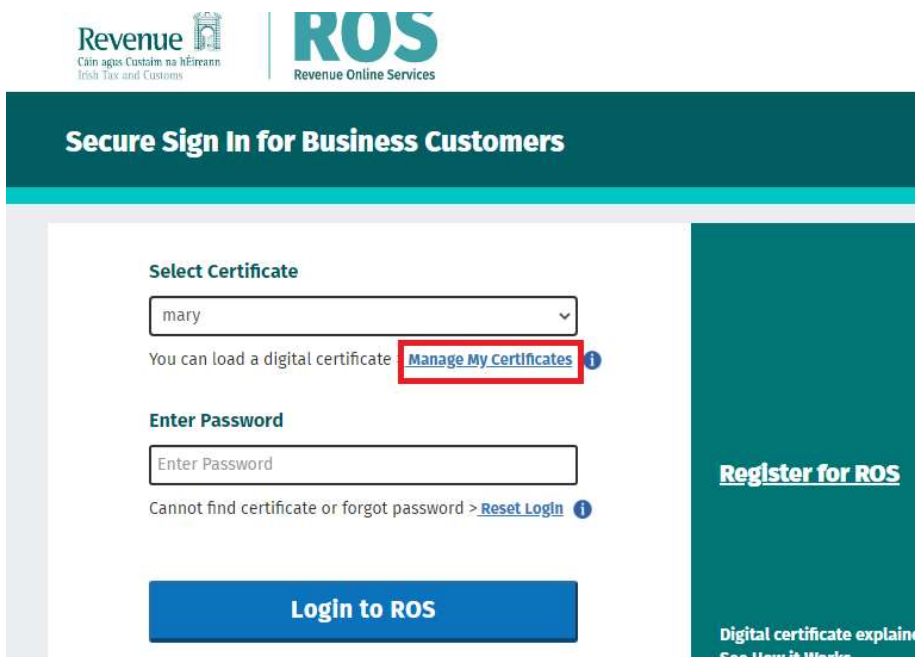


4. Check for any prompt from your browser asking you to confirm the Save. This may appear at the very bottom of your screen. If asked, always choose **Save**.
5. Check your Downloads folder to ensure that the file has been saved

You will need to carry out those steps for each certificate you have loaded.

## **Step 2 – Load your Certificate into a new Browser**

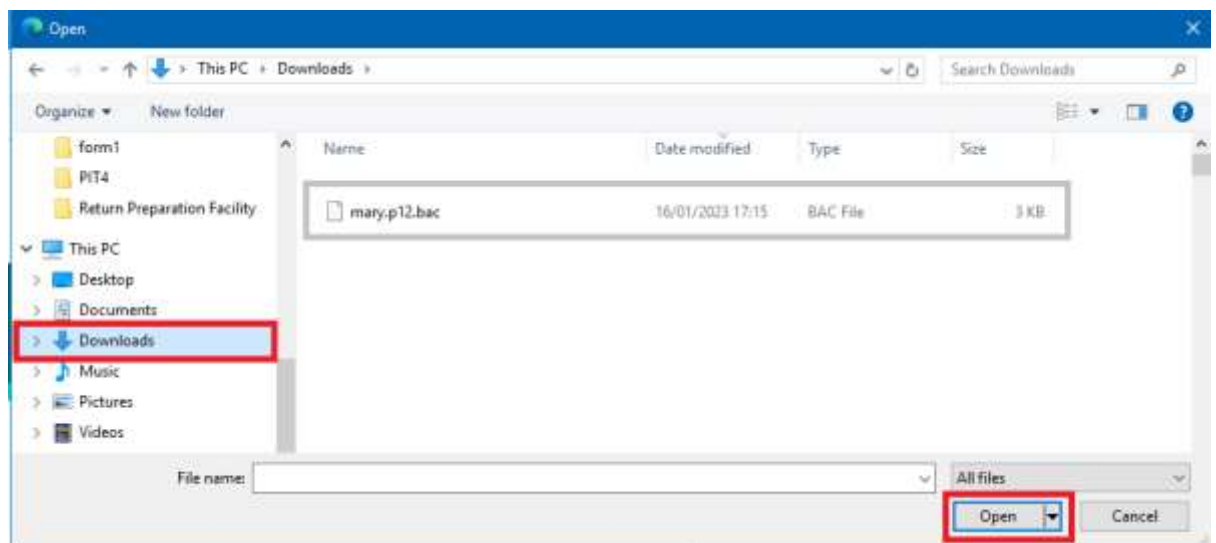
1. Using the new browser, click **“Manage My Certificates”** on the ROS login screen.



2. In the Manage My Certificates screen, click the option “Click to browse for a file”



3. The file chooser will open. Navigate to Downloads and locate the certificate file you saved from the old browser. Select that certificate file and click the Open button.



4. The filename will appear in the grey box:



5. Type in your ROS login password and click the **“Load Certificate”** button.
6. Click on **“Return to login”** to return to the login screen and login to ROS with the new browser.